

LEXICOGRAPHICAL AND LEXICOLOGICAL PROJECTS

Other relations state that an EU can be shared by more than one LU, see fig. 2.



Fig. 2

So too it is stated that translation is a relation (a link) between two units from two different languages, of a specific nature, either an LU or an EU, see fig. 3.

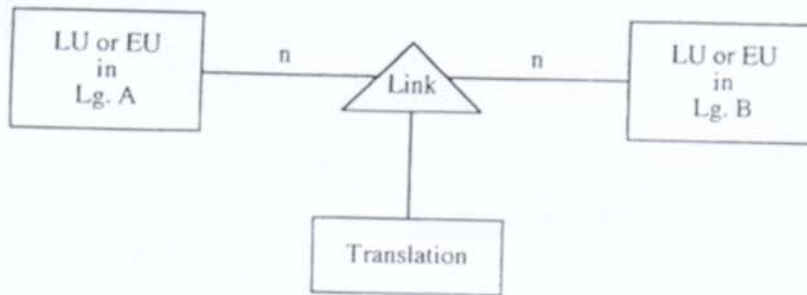


Fig. 3

In other words, the UDS describes a basic, yet fundamental, data model which is used for all OMBI-dictionaries, giving OMBI its generic character. Fig. 4 and 5, respectively, summarize the 'empty' data model and 'fill' or illustrate it.

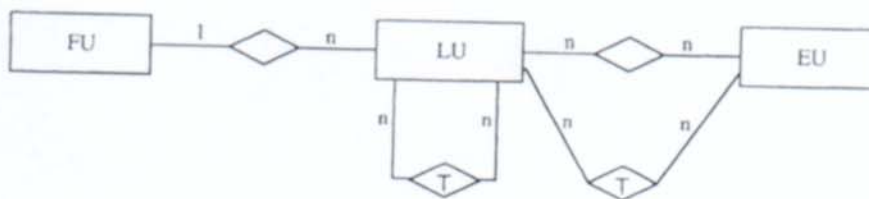


Fig. 4